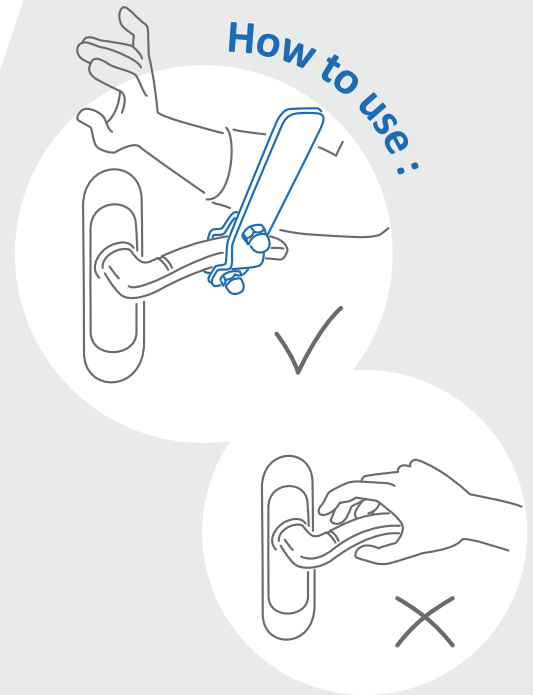
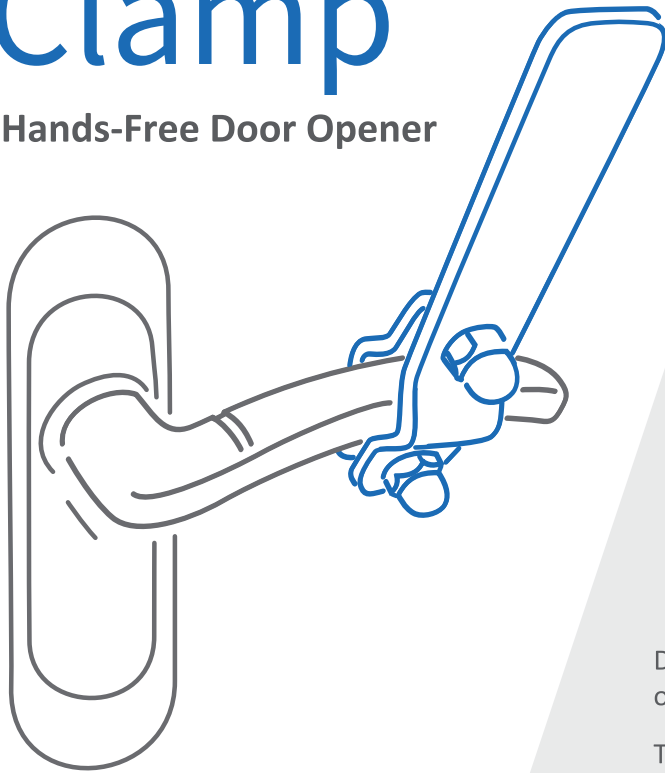


# PORTIER Clamp

Hands-Free Door Opener



## Two color options:



Red



Black

Doorknobs are among the most virus- and germ-infested objects in houses, clinics, offices and factories.

This conductor clamp could be easily applied as a hands-free door opener. Our easy-to-use door opener does not require drilling holes or replacing your door's handle.

You just need to fasten the clamp with screws over the existing doorknob.

- ✓ Highly resistant, made of STEEL
- ✓ No sharp edges, covered with rubber
- ✓ Easy to install, 5 mins

**Let's work together to stop COVID - 19 spread!**



## Product References :

● HF.DO.POLT.A1.01 - BLACK

● HF.DO.POLT.A4.01 - RED

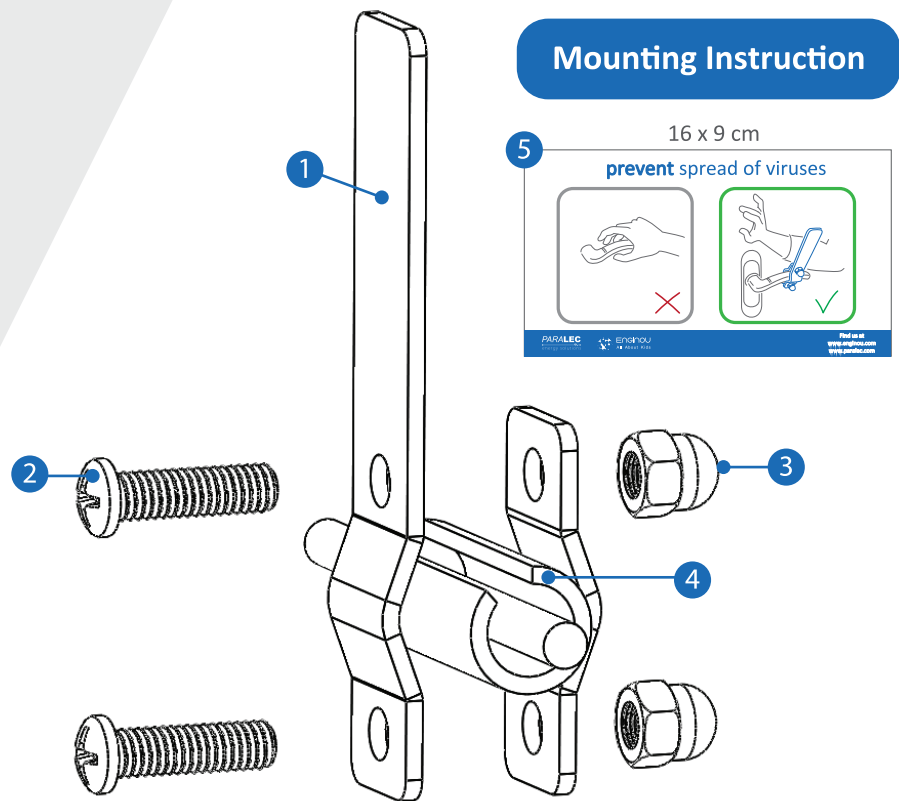


Keep social distance, wash your hands and avoid touching your face!

## In the package

- 1 1 x clamp
- 2 2 x bolts 20mm
- 2 2 x bolts 30mm
- 2 2 x bolts 40mm
- 3 2 x nuts
- 4 1 x rubber insert
- 5 1 x door sticker
- 1 x Operating manual

## Mounting Instruction

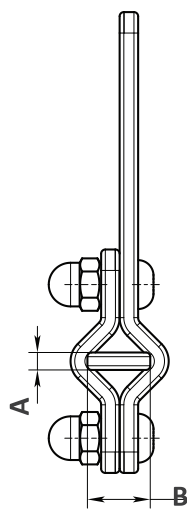
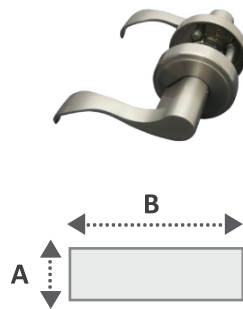


## Handle Type



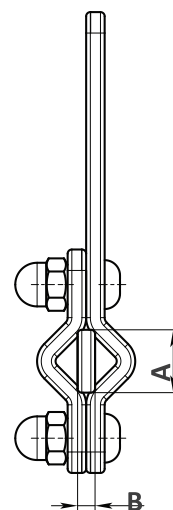
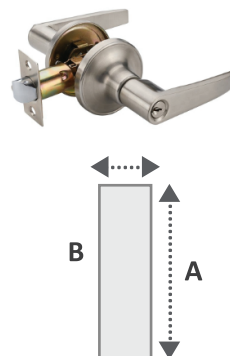
Consult us

Example of Handles



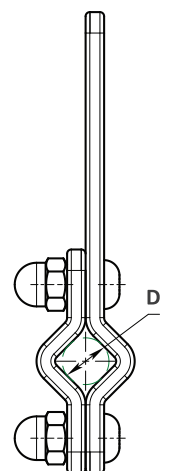
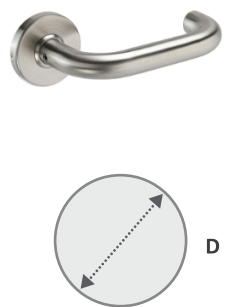
	A/B, mm
Min	3 / 15 with Rubber insert, bolt 20mm
Max	25 / 35, bolt 40mm

Example of Handles



	A/B, mm
Min	15 / 3 with Rubber insert, bolt 20mm
Max	35 / 25, bolt 40mm

Example of Handles



	D, mm
Bolt 20mm	12...15 with Rubber insert 15...20
Bolt 30mm	19...23 with Rubber insert 23...28
Bolt 40mm	28...32 with Rubber insert 32...37

For smaller dimensions use the RUBBER insert supplied